

动感 – 高精度晶圆ID标示分类系统 DYNAMICS

最洁净之无接触雷射打标

提供最佳晶圆及玻璃ID标示自动化解决方案，DM-200/DM-300 CO² 雷射打标/划线/分拣系统配备有一个3轴同步雷射控制系统以精确标记和改善在传统大平面打标之扭曲问题。

高智能自动化系统可确保安全地由晶圆之正面进行取/放：配有智能型轻触式机能(Soft-Touch) 以随时微调抓取力(1N ~ 7N), 故能安全无应力地防止晶圆移位和旋转。

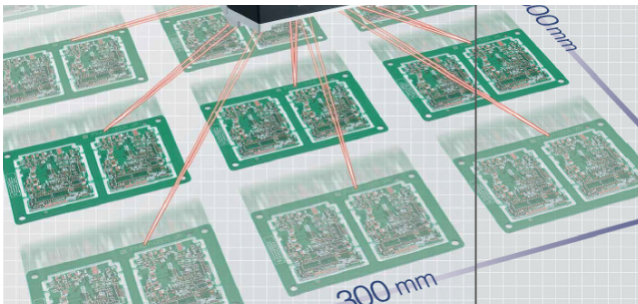
完全无接触之抓手及对位器严防作业时造成的污染。50 μm / 0.03° 高精度对位器则大幅降低打标预留空间，对位器亦具buffer以增加产能。

FEATURE

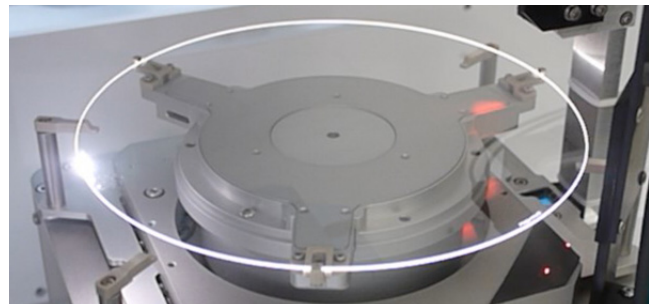
- For 200 or 300mm, thin or thick, silicon, glass or compound substrates
- Contactless handling
 - contamination free
- High precision marking
 - less area needed
- Chip ID marking
 - uniform spot size covers 300mm x 30mm wide area
- For fine-line standard or custom font, image, bar code/2D matrix & scribing
- Highly configurable platform, up to 6 ports/200mm, 4 ports/300mm for wafer sorting



八吋机型仅占地
1420mm x 1300mm



Marking coverage 打标范围
300mm x 300 mm



Alignment repeatability 对位精度 50 μm centering/
0.03° angular; marking speed 打速度 - 6000 mm/s max;
resolution 5 μm

标准规格 *

- * 200mm or 300mm Si, glass & compound wafers
- * Manual door
- * Up to 6 ports/200mm, 4 ports/300mm
- * 1 robot with SoftTouchedge grip end effector
- * 1 SoftTouchedge grip aligner
- * Detect carrier presence
- * Detect empty, double or cross slotted wafers
- * Manual or S/W driven sorting
- * Bilingual GUI (English/Chinese)
- * SECS/GEM protocol compliant

升等配备 (请与制造厂确认)

- * Wafer protrusion detection
- * Flipping for both side marking
- * Aligner with buffer
- * Aligner supports thin wafers
- * Auto door
- * SMIF/FOUP/coin stack shipper
- * FFU/Ionizer/Exhaust
- * ID readng: OCR supports for top, bottom, or both. Most common codes supported
- * Carrier ID (bar code/RFID)
- * SECS/GEM communication

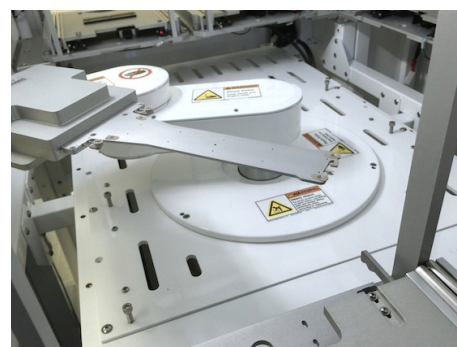
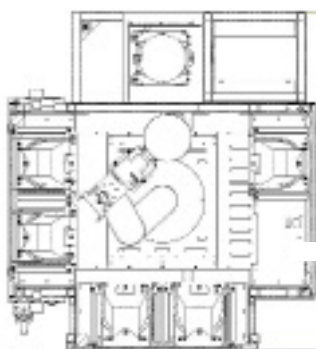


Sample fonts

技术规格 (可依客户需求调整雷射规格)

Marking area	300 x 300 mm	Scribing/cutting	Line, dot, circle, oval etc.
Working distance	300 ± 21mm	Wavelength	10.6 μm
Marking resolution	5 μm	Laser type	CO ₂ laser, class 4 laser Product
Scan speed	6000 mm/s max.		
Character type	Std or custom font, bar code, 2D-code, GS1 DataBar, bmp/jpg image	Supply voltage	100 to 120 VAC / 200 to 240 VAC 50 / 60 Hz 1500 VA

外外观样 SAMPLE 8" PLATFORM LAYOUT (Approxi. 1420 L x 1300 W x 1900 H mm)



* 产品规格有可能更改，恕不另行通知

QUARTET MECHANICS INC.
 email: inquiry@quartetmechanics.com / www.quartetmechanics.com
 4055 Clipper Court, Fremont, CA 94538, USA
 P +1.510.490.1886 / F +1.510.490.1887

Quartet
MECHANICS

亚洲地区请洽询 周先生 +86.173.0165.2253 / Email: nchou@quartetmechanics.com