

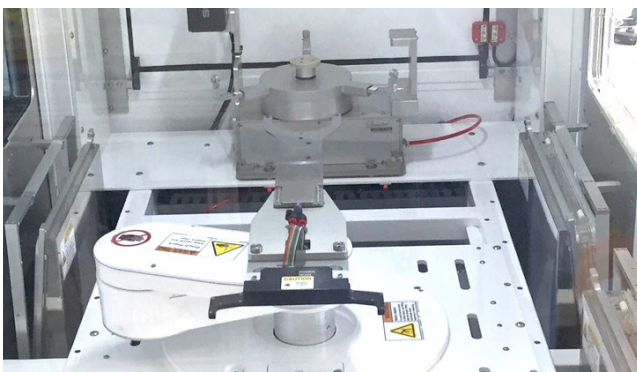


The S350 series of high-speed wafer sorter use the core of the exclusive patented components. We provide both high performance, low maintenance costs and flexible combination of accessories, which is your best wafer transfer program.

- Degree of reproducibility: $50\mu\text{m} / 0.03^\circ$.
 - HEPA - High Efficiency Particulate Air Fan Filter Units (FFU).
 - One machine can be compatible with "8" and 12" wafers. It takes only one hour to change dimensions.
- Available FOUP, FOSB, SMIF and cassette.



S350-TN thin wafer specific Vortex Gripper



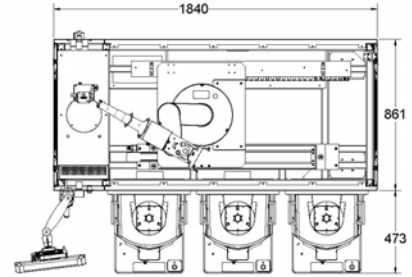
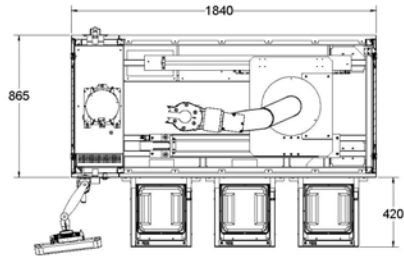
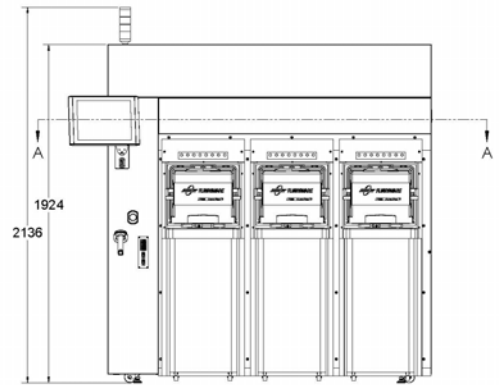
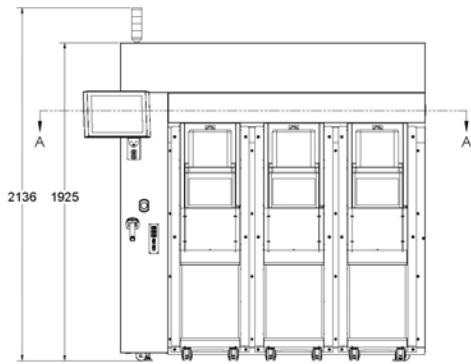
8"/ 12" wafer sharing

- Simple man-machine interface, can be flexible to set delivery rules.



- Multiple upgrade options: Front pick, flipper, transfer special wafer(glass, wide thickness, thin warped, perforated, highly warped), the wafer ID can be read on both sides.

SPECIFICATION



SECTION A-A

SECTION A-A

THIN WAFER

| Standard Configuration | | THIN WAFER | MULTI-SIZE |
|------------------------|--------------------------|--|-----------------------------------|
| Model # | | S350-TN | S350-MS |
| Wafer size | Diameter | 300mm | 300 & 200mm |
| Carrier | | cassette/ SMIF Pod | FOUP & SEMI-Std FOSB/ cassette |
| Platform | Auto Port # | 2 | 3 |
| | Specification | Auto Port with RFID & Mapper; class 10 cleanliness, ESD | |
| Placement | Position Repeat-ability | 50 μ | |
| | Angle Repeatability | 0.03° (optional 0.01°) | |
| Component | Robot | SCARA/ single arm | |
| | End Effector | Vacuum, optional Edge grip (1 ea) | |
| | Aligner | Vacuum, optional Edge grip (1 ea) | |
| | OCR | 1 or 2 ea | |
| Software | OS | Manufacturer's standard operation system | |
| | User Interface | English or/and Chinese GUI | |
| | Equipment Inter- face | CAN, TCP/IP or RS232 | |
| | Factory Interface | SECS/GEM communication | |

QUARTET MECHANICS INC.

www.quartetmechanics.com

1040 Di Giulio Ave, Ste 100, Santa Clara, CA 95050, USA

P +1.408.564.8901

Email: inquiry@quartetmechanics.com

